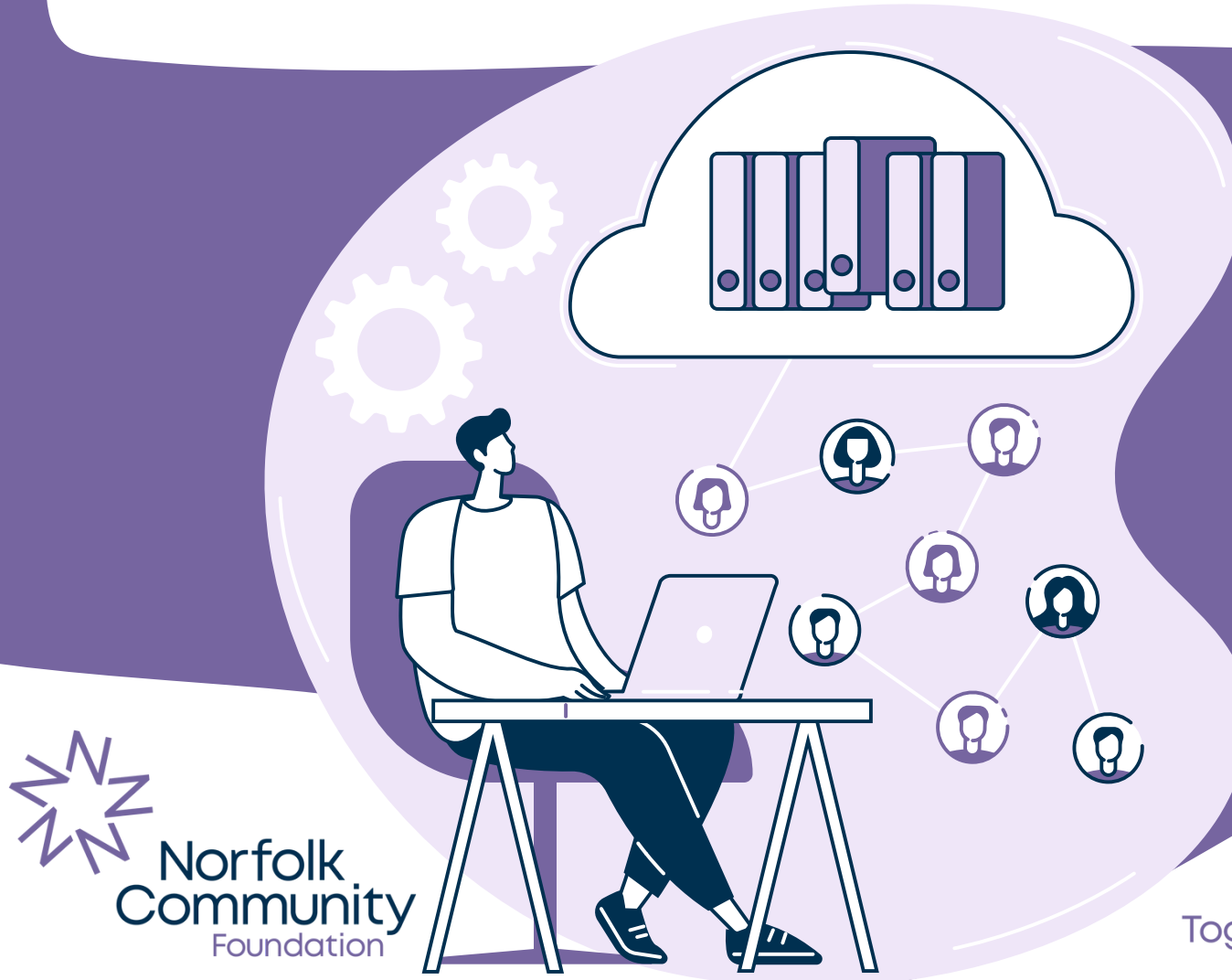


Further resources

Community Research Resources Bank



Here are some resources for further reading if you would like more information on any of the topics or stages of community research discussed in this guide.

General guides to community research

- [The Good Evidence Guide - Greater Manchester Centre for Voluntary Organisations.](#)
- [Community Research Toolkit - Association for Research in the Voluntary and Community Sector.](#)

Both of these guides provide more in-depth information on what community research is, methods of community research, planning and conducting community research, and disseminating findings.

Approaches to research

Participatory Action Research: Toolkit - University of Reading

University of Reading have produced a toolkit for community organisations to better understand the principles and everyday practices of Participatory Action Research.

Co-production: what is it and how to use it - The Social Care Institute for Excellence

A guide on what co-production is, and how to put it into action.

Research methods

Qualitative Research Methods: A data collector's field guide - Mack, N., et al.

This book provides in depth information on the different methods of qualitative research, including participant observation, interviews and focus groups. This book also contains different templates for you to use to build and plan your research.

Qualitative methodology and discussion guide - Healthwatch

This guide gives an overview on what community research is, different methods of qualitative research, and how to develop discussion guides.

But how do you do a narrative interview? - Social Research Association

A blog post discussing the approach of a narrative interview.

Planning a survey - Healthwatch

This guide gives information on how you can develop a survey.



Participants

Increasing Diversity in Research Participation - NHS

This guide provides information on why research participation might be low in groups and ways to increase participation in research.

Briefing notes for researchers - public involvement in NHS, health and social care research- National Institute for Health and Care Research

Information and guidance on involving the public in research.

Inclusive Research - Healthwatch

Healthwatch provide guidance on ensuring that your research is inclusive and have developed resources to help researchers listen to people from specific groups, including people with learning disabilities, people experiencing homelessness, refugees and asylum seekers, and young people.

Research with children: ethics, safety and promoting inclusion - NSPCC Learning

NSPCC provides guidance on consent when doing research with children.

Data management

UK GDPR Guidance and Resources - Information Commissioner's Office

The Information Commissioner's Office provides guidance documents for organisations on UK GDPR.

Data analysis

How to analyse qualitative data- Healthwatch

Healthwatch provide guidance on the steps of qualitative analysis and provides tips on how to report qualitative data.

Quantitative data analysis - Healthwatch

Healthwatch provide guidance on the steps involved in quantitative data analysis.

Writing up insights

How to write an impactful research or engagement report - Healthwatch

Healthwatch provides a guide on how to write a research report to share your findings.

Ethics

Framework for research ethics- UK Research and Innovation (UKRI)

UKRI explains the six principles of ethical research which should be considered when community research is conducted.

Research ethics and risk - Healthwatch

Healthwatch provides information on the risks involved with community research and how to assess them.

Training

Here are some training resources which you can use to develop your skills and knowledge around community research.

Focus group training - Norfolk Community Foundation

Norfolk Community Foundation have developed training to help community organisations conduct their own focus groups. The training includes a PDF document and a recorded online training session.

Social Research Association (SRA) training courses

SRA provide different courses which support research. Training covers topics such as: qualitative data analysis, introduction to qualitative research, introduction to participatory action research, and research with children and young people. Courses take place online and in person and do have a cost to attend. SRA members receive a discount on the training.

The Young Foundation

The Young Foundation offer training to help develop the skills, knowledge and confidence of peer researchers.

Research Methods: A practical guide to peer and community research - Future Learn

Future Learn offer a ten-week online course from King's College London to provide an overview of research, helping to support people to conduct their own.

Community research training - Centric

Centric offer training and development programmes on topics such as qualitative research, analysis, report writing and ethics.

Community Based Research: Getting started - University College London

University College London offer a three-week course to help learn the skills needed to conduct community research.



Templates and guides

Here are some templates that you might find useful when planning and conducting your community research.

Qualitative Research Methods: A data collector's field guide- Mack, N. Et al.

The book provides some useful templates to assist with conducting qualitative research. Some of the templates you might find useful are:

- Sample interview guide with field notes - page 46
- Sample interview transcript - page 47
- Interview steps - page 48
- Interview checklist - page 49
- Sample focus group guide - page 68
- Sample note taker field notes - page 70
- Data management checklist - page 91

Focus Group Training - Norfolk Community Foundation

Alongside their focus group training, Norfolk Community Foundation have produced:

- A template focus group consent form
- A template focus group write up form

Planning your research flowchart - ARVAC

ARVAC provide a flow chart for a step-by-step guide on how to approach community research and the process you might need to follow.

Examples of research reports

Here are some examples of organisations that use different report styles to present their research findings.

- [Norfolk Community Foundation](#)
- [Young Foundation](#)
- [Toynbee Hall](#)
- [Nesta](#)
- [Revealing Reality](#)



Want to find out more?

Read our other guides on community research

1

What is community research and why should you do it?

Discover the ins and outs of community research, the approaches you can take, and why it matters.



2

Designing your research project

Find out what you need to think about when developing a research project, including deciding your research questions, involving people, ethics, data management and more.

3

Carrying out research

Learn how to recruit research participants, gather and analyse your insights, and write up your findings.

4

Further resources

Explore helpful links and resources to learn more about community research.



Find out more or get in touch

- www.norfolkfoundation.com
- 01603 623958
- Shinebrighter@norfolkfoundation.com
- 1st Floor, Carmelite House, 2 St James Court, Norwich, NR3 1SL

NIHR | Clinical Research Network East of England

Acknowledgements: Funded by the National Institute for Health and Care Research. Thank you to Sophie Fuller for producing these resources.

Follow us on social media

- @NorfolkCF
- @NorfolkCF
- @NorfolkCF
- @NorfolkCommunityFoundation



Together, Norfolk shines brighter
Registered Charity Number 1110817
Company Registration Number 05234236